

# TIRPENTWYS QUARRY, nr. CRUMLIN

R. THOMAS, D. EMANUEL

## INTRODUCTION

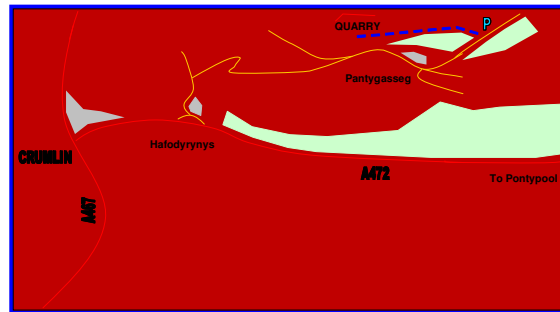
A very popular sports climbing venue developed thanks to the efforts of Paul Bowen. The routes are generously bolted and cover a range of grades.

## LOCATION (NGR 324800, 200000, 290m A.O.D.)

X  
x

- 1. From Crumlin – x
- 2. X
- 3. X
- 4. x
- 5. From Pontypool – Following the A4042 x
- 6. X
- 7. X
- 8.

X  
X  
X  
X  
X  
X  
X  
X  
X  
X



X  
X  
X  
X  
X  
X  
X  
X  
X  
X

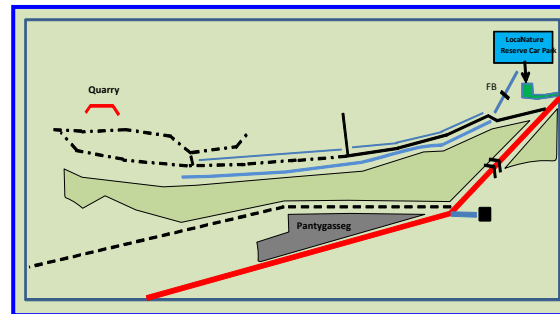
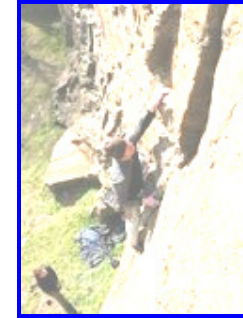


Image courtesy of A. Rosier

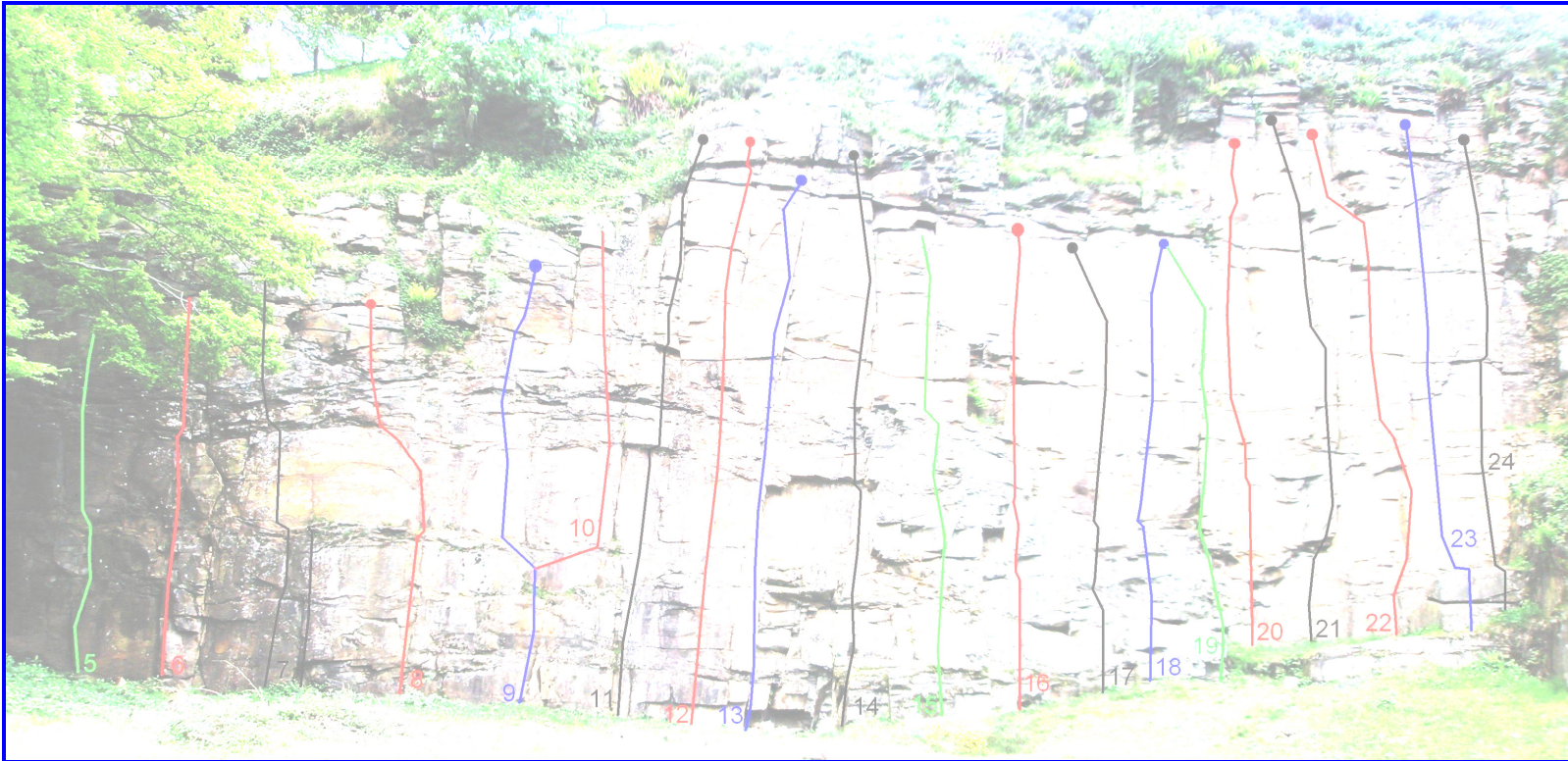
- 1.
- 2.
- 3.
- 4.
- 5.
- 6.
- 7.
- 8.
- 9.
- 10.
- 11.
- 12.
- 13.
- 14.
- 15.
- 16.
- 17.
- 18.
- 19.
- 20.
- 21.
- 22.
- 23.
- 24.

**TIRPENTWYS QUARRY, nr. CRUMLIN**

**R. THOMAS, D. EMANUEL**



*Images courtesy of A. Rosier*



Climbing is a dangerous activity and should only be undertaken by those with suitable experience. Whilst this document attempts to accurately record the routes at the quarry, mistakes may have occurred in the descriptions and routes can change. Climbers should therefore make their own judgement of a route before

attempting it. Climbers should also make their own judgement on the quality of in-situ equipment. Bolts and lower-offs may become stolen or damaged. All routes are climbed at your own risk